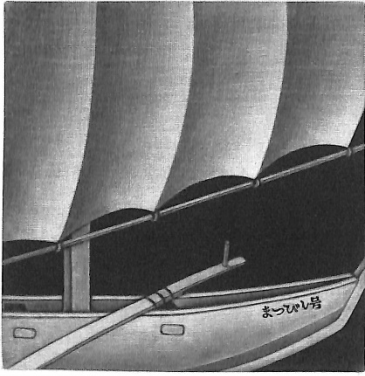
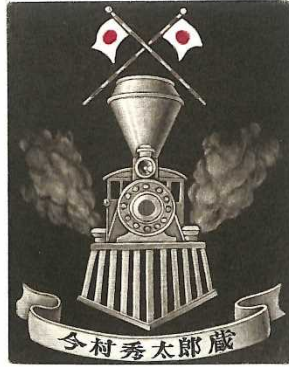


浜西勝則 Hamanishi Katsunori  
書票 I Exlibris I (1/10)



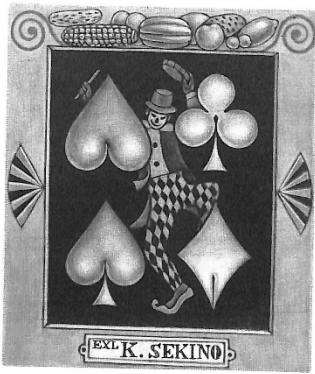
op006. Tazuo Matsubishi 松菱多津男  
Japanese-style ship C7 82×82 1989



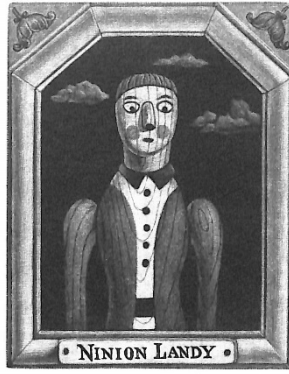
op007. Hidetaro Imamura 今村秀太郎  
locomotive C7 85×68 1990



op08. Eiichi Kawano 河野英一  
rocking horse C7 67×86 1990



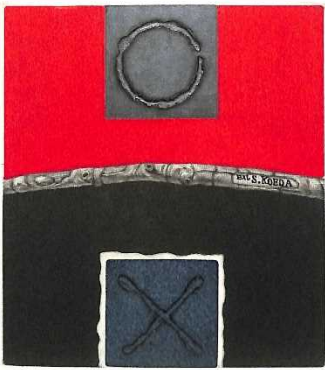
op10. Kinya Sekino 関野欽也  
joker C7 95×82 1990



op11. Ninion Landy  
wood toy C7 86×67 1990



op14. Shoichi Koeda 小枝昭一  
weathercock C7 70×87 1992



op15. Shoichi Koeda 小枝昭一  
position C7 鉛箔 97×87 1992



op16. Kinya Sekino 関野欽也  
position C7 鉛箔 97×87 1992



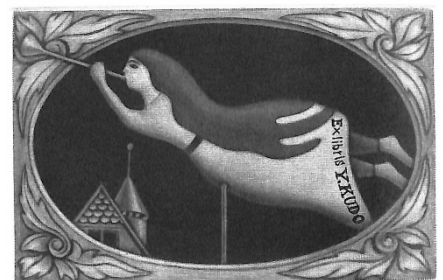
op17. Yoshiharu Ochiai 落合良治  
winged deity C7 95×80 1993



op18. Koji Saruta 猿田耕司  
carp streamer C7 94×63 1994



op19-1. Yuzuru Kudo 工藤譲  
vane C7 63×96 1994

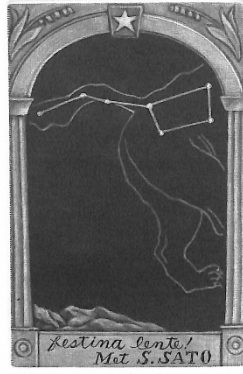


op19-2. Yuzuru Kudo 工藤譲  
different color

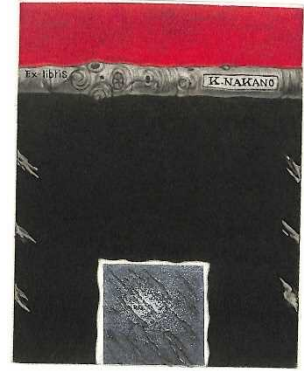
浜西勝則 Hamanishi Katsunori  
書票 I Exlibris I (2/10)



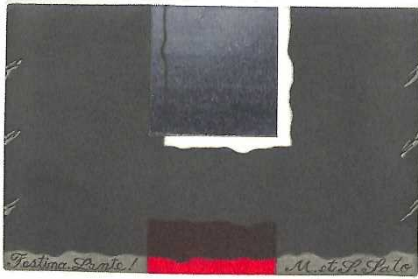
op20. Yuzuru Mutsuko 工藤讓 むつ子  
vane C7 95×63 1994



op21. Shozo Sato 佐藤昌三  
ursa major C7 97×63 1994



op22. Koshi Nakano 中野孔四  
solitude C7 鉛箔 197×83 1995



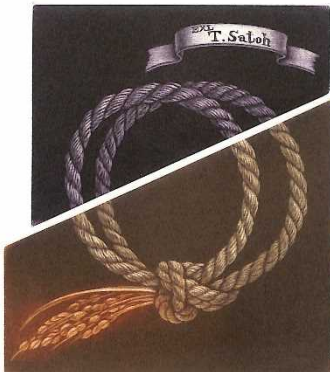
op23. Shozo Sato 佐藤昌三  
peaceful mind C7 鉛箔 63×97 1995



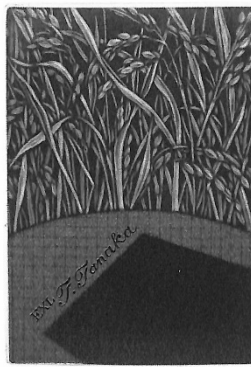
op24. Akiko Uchida 内田晶子  
day and night C7 93×77 1995



op25. Ichigoro Uchida 内田市五郎  
ritual decoration C7 110×98 1995



op26. Tomoyasu Sato 佐藤友泰  
twin C7 112×98 1995



op27. Chikuo Tanaka 田中築夫  
green field C7 89×62 1996



op28. Shozo Sato 佐藤昌三  
elegance C7 108×55 1996



op29. Shozo Sato 佐藤昌三  
country road C7 鉛箔 108×55 1996



op33. Koshi Nakano 中野孔四  
field C7 95×62 1996



op34. Ichigoro Uchida 内田市五郎  
field C7 63×88 1996

浜西勝則 Hamanishi Katsunori  
書票 I Exlibris I (3/10)



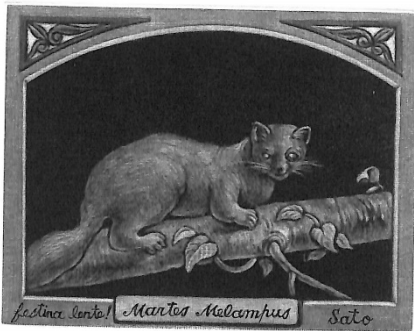
op35. Tsuyako Hamanishi 浜西つや子  
rice field C7 95×62 1996



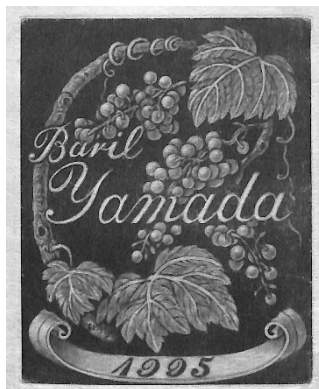
op36. Shozo Sato 佐藤昌三  
ochotona hyperborea1  
C7 73×93 1996



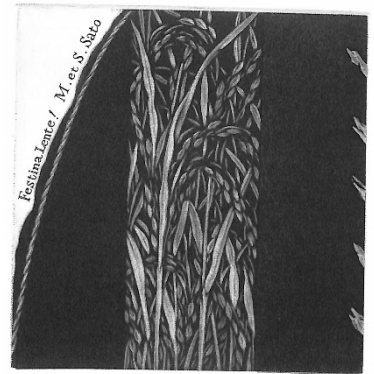
op37. Shozo Sato 佐藤昌三  
ochotona hyperborea2  
C7 73×93 1996



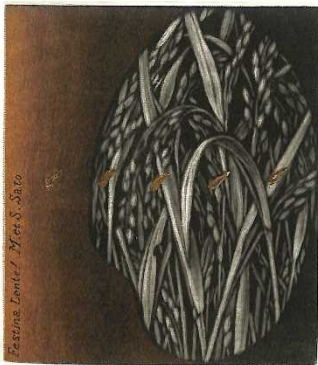
op38. Shozo Sato 佐藤昌三  
martes melampus C7 70×92 1996



op39. Yamada Company 山田商会  
wine label C7 97×76 1996



op41. Shozo Sato 佐藤昌三  
cold blast C7 100×100 1997



op44. Shozo Sato 佐藤昌三  
fragrance  
C7 金箔 93×82 1999



op45. Ichigoro Uchida 内田市五郎  
bowing their heads  
C7 金箔 113×83 1999



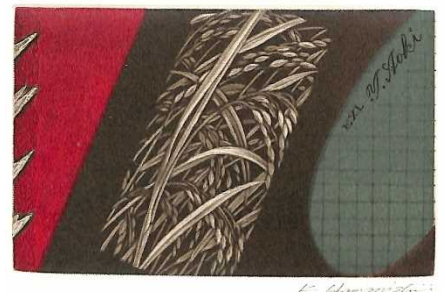
op46. Shozo Sato 佐藤昌三  
spirit of rice field  
C7 金箔 93×63 2000



op47. Shozo Sato 佐藤昌三  
mountain C7 95×74 2001



op49. Yasuhiko Aoki 青木康彦  
range of mountains C7 95×78 2001



op50. Yasuhiko Aoki 青木康彦  
festival C7 63×100 2001

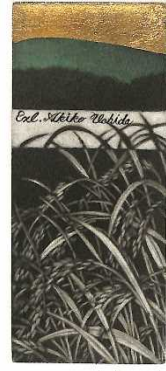
浜西勝則 Hamanishi Katsunori  
書票 I Exlibris I (4/10)



op51. Shozo Sato 佐藤昌三  
aurora and ursa major  
C7 107×78 2001



op52. Ichigoro Uchida 内田市五郎  
lake in the evening sun  
C7 113×52 2001



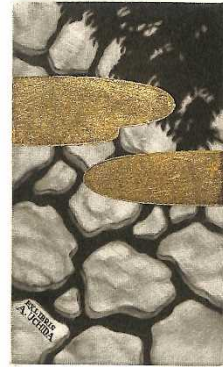
op53. Akiko Uchida 内田晶子  
green mountain \_ the lake  
C7 金箔 103×43 2001



op55. Shozo Sato 佐藤昌三  
blue lake C7 金箔 97×50 2002



op56. Yasuhiko Aoki 青木康彦  
moon flower C7 金箔 97×50 2002



op57. Akiko Uchida 内田晶子  
cobble pavement C7 金箔 98×57 2002



op58. Ichigiro Uchida 内田市五郎  
stepping stones C7 98×59 2002



op59. Motohisa Kaneko 金子元久  
cherry blossoms C7 金箔 108×76 2003



op60. A. J. van Waterschoot  
flower C7 金箔 88×88 2003



op62. Wouter van Gysel  
mountains C7 金箔 110×86 2003

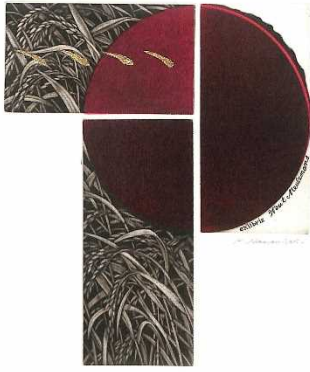


op63. Gil Beumont  
genroku C7 銀箔 63×120 2003



op64. Motohisa Kaneko 金子元久  
red leaves C7 108×48 2003

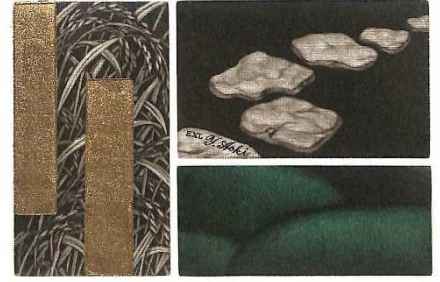
浜西勝則 Hamanishi Katsunori  
書票 I Exlibris I (5/10)



op65. Wout Meulemans  
female demon C7 金箔 130×110 2003



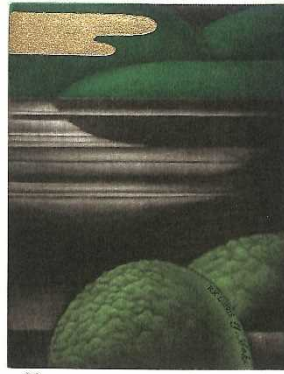
op66. Shoichi Koeda 小枝昭一  
ancient city C7 金箔 106×84 2003



op67. Yasuhiko Aoki 青木康彦  
elegance C7 金箔 70×106 2003



op68. Shozo Sato 佐藤昌三  
heat waves C7 金箔 110×47 2003



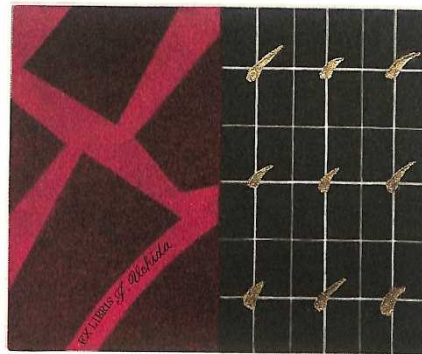
op69. Yasuhiko Aoki 青木康彦  
C7 金箔 107×82 2003



op70. George Sekine 関根丞治  
cross C7 鉛箔 98×63 2003



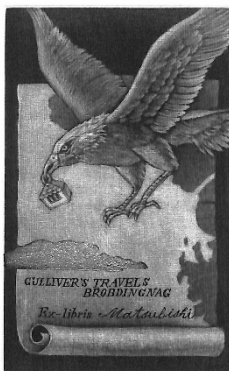
op71. Hisao Haneda 羽田寿夫  
running water C7 金箔 98×79 2003



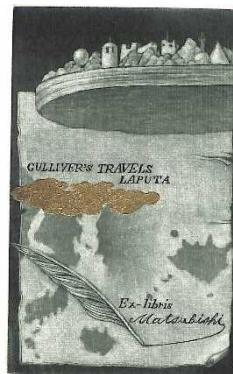
op72. Ichigoro Uchida 内田市五郎  
on the farm C7 金箔 80×98 2003



op73. Tazuo Matsubishi 松菱多津男  
lilliput C7 金箔 116×72 2003



op74. Tazuo Matsubishi 松菱多津男  
broodingnag C7 銀箔 116×72 2003

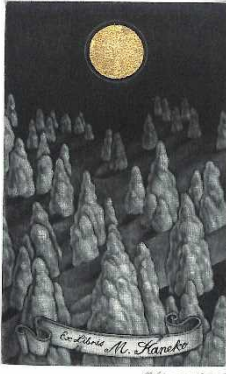


op75. Tazuo Matsubishi 松菱多津男  
laputa C7 金箔 117×72 2003

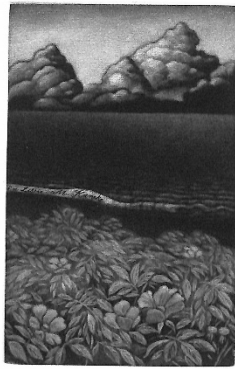


op76. Tazuo Matsubishi 松菱多津男  
houghnhnms C7 117×72 2003

浜西勝則 Hamanishi Katsunori  
書票 I Exlibris I (6/10)



op77. Motohisa Kaneko 金子元久  
Mt.Zao C7 金箔 117×72 2004



op78. Motohisa Kaneko 金子元久  
sweet brier C7 113×73 2004



op79. Shoichi Koeda 小枝昭一  
floral haze C7 117×73 2004



op80. Yoshiharu Ochiai 落合良治  
drooping cherry tree  
C7 金箔 117×73 2004



op81. Yoshiharu Ochiai 落合良治  
white chrysanthemum  
C7 金箔 117×73 2004



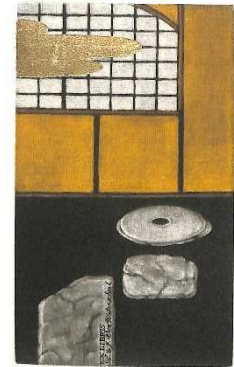
op82. Motohisa Kaneko 金子元久  
rising-sun kite  
C7 金箔 117×88 2004



op83. Shozo Sato 佐藤昌三  
spring evening C7 金箔 2004



op84. Shoichi Koeda 小枝昭一  
hawk & family emblem  
C7 金箔 117×94 2004



op85. A \_ J. van Waterschoot  
window C7 金箔 117×70 2004



op86. Yasuhiko Aoki 青木康彦  
garden paved with stones  
C7 金箔 87×124 2004



op87. Akiko Uchida 内田晶子  
day and night C7 金箔 104×78 2005



op88. Kazuko Mori 森和子  
veranda C7 108×70 2005

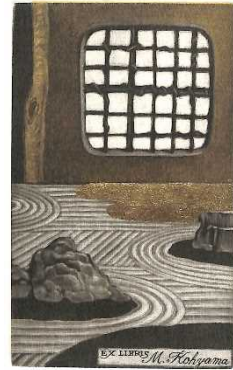
浜西勝則 Hamanishi Katsunori  
書票 I Exlibris I (7/10)



op89. Masakatsu Kurosawa 黒澤正勝  
garden lantern  
C7 玉虫箔 95×95 2005



op90. Kosaku Yamada 山田耕筈  
the ruins of Toro  
C7 117×74 2005



op91. Mikio Kouyama 神山幹夫  
combed sands garden  
C7 金箔 115×70 2005



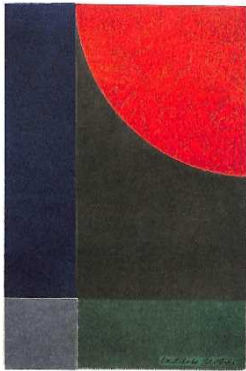
op92. Hideo Ariizumi 有泉英雄  
wedding anniversary  
C7 金箔 75×130 2005



op93. Yoshiharu Ochiai 落合良治  
peony C7 117×83 2005



op94. Yoshiharu Ochiai 落合良治  
water lily C7 70×117 2005



op95. Yasuhiko Aoki 青木康彦  
the sun C7 123×83 2005



op96. Yasuhiko Aoki 青木康彦  
five stars C7 金箔 100×77 2005



op97. Ichigoro Uchida 内田市五郎  
door C7 130×80 2005



op98. Gernot Blum  
round window C7 金箔 100×95 2005

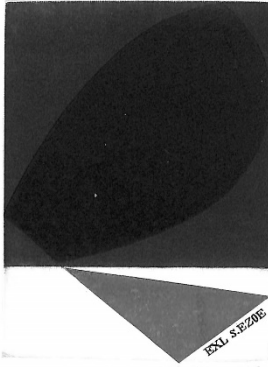


op99. Motohisa Kaneko 金子元久  
early autumn C7 100×68 2005

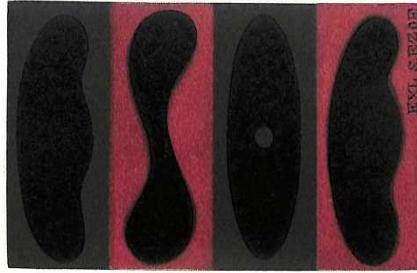


op100. George Sekine 関根丞治  
Don Quijote & Sancho Panza  
C7 金箔 148×67 2005

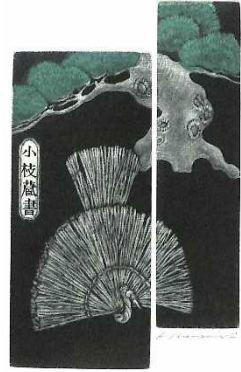
浜西勝則 Hamanishi Katsunori  
書票 I Exlibris I (8/10)



op101. Shonosuke Ezoz 江副章之介  
barrel C7 97×74 2005



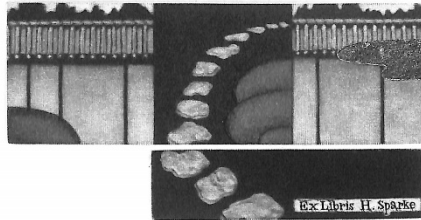
op102. Shonosuke Ezoz 江副章之介  
procession C7 65×100 2005



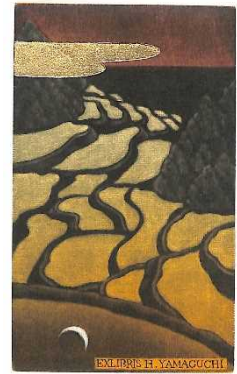
op103. Shoichi Koeda 小枝昭一  
crane & pine tree C7 102×70 2005



op104. Talling\_ Thea Vogelvangner  
sunset C7 金箔 114×44 2005



op105. Horst E. Sparke  
path C7 金箔 57×110 2005



op106. Hiroo Yamaguchi 山口博男  
moon in rice fields  
C7 金箔 116×70 2006



op107. Yoshiharu Ochiai 落合良治  
structure C7 97×70 2006



op108. Yoshiharu Ochiai 落合良治  
seabed C7 鉛箔 2006



op109. Yasuhiko Aoki 青木康彦  
unit C7 97×80 2006



op110. Mikio Kouyama 神山幹夫  
morning mists & twilight C7 104×80 2006



op111-1. Motohisa Kaneko 金子元久  
early summer C7 112×72 2006



op111-2. Motohisa Kaneko 金子元久  
C7 76×65 2006



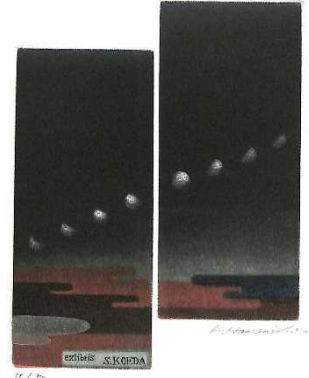
浜西勝則 Hamanishi Katsunori  
書票 I Exlibris I (9/10)



op112. Masakatsu Kurosawa 黒澤正勝  
retro C7 83×125 2006



op113. Frank Gotz  
nature C7 130×110 2006



op114. Shoichi Koeda 小枝昭一  
moon 115×87 2006



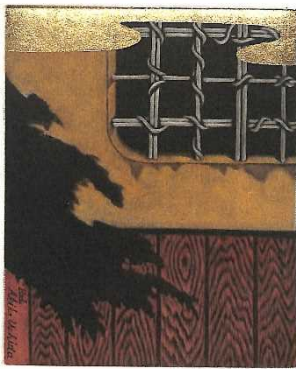
op115. Hisao Haneda 羽田寿夫  
dawn C7 100×64 2006



op116. Hisao Haneda 羽田寿夫  
daybreak C7 鉛金箔 104×65 2006



op117. Gernot Blum  
lotus C7 金箔 105×64 2006



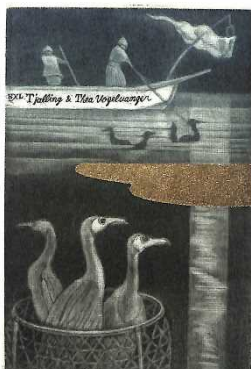
op118. Akiko Uchida 内田晶子  
wall-No1 C7 金箔 100×80 2007



op119. Ichigoro Uchida 内田市五郎  
wall-No2 C7 金箔 100×87 2007



op120. Masakatsu Kurosawa 黒澤正勝  
snow view lantern C7 87×87 2007



op121. Talling & Thea Vogelvanger  
ukai C7 金箔 100×70 2007

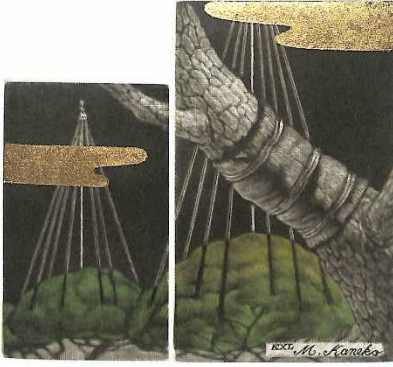


op122. Shozo Sato 佐藤昌三  
lily bell C7 100×48 2007



op124. Mikio Kouyama 神山幹夫  
shoji screen in winter  
C7 100×70 2007

浜西勝則 Hamanishi Katsunori  
書票 I Exlibris I (10/10)



op125. Motohisa Kaneko 金子元久  
preparation for winter  
C7 金箔 95×104 2007



op126. Akira Wachi 和智朗  
Arkansas C7 金箔 67×110 2007



op127. Shozo Sato 佐藤昌三  
rose C7 95×43 2007



op129. Frank Gotz  
four-season C7 金箔 120×100 2007



op130. Masataka Ota 太田正孝  
tea ceremony garden  
C7 金箔 100×65 2007



op131. Yoshiharu Ochiai 落合良治  
Oze marshland C7 金箔 150×77 2007



op132. Yoshiharu Ochiai 落合良治  
red Mt. fuji C7 金箔 88×107 2007



op133. Wouter van Gysel  
lotus with wall screen  
C7 88×110 2007



op134. Wouter van Gysel  
mud wall C7 金箔 105×65 2007



op135. Evert Veldhuizen  
Japan C7 金箔 67×107 2007



op136. Yasuhiko Aoki 青木康彦  
the tale of Gengiforeword  
C7 120×70 2008



op137. Mikio Kouyama 神山幹夫  
shoji screen in autumn  
C7 120×70 2008